

A story about the two crucifixes

Double Bass

Cedric Van Hof

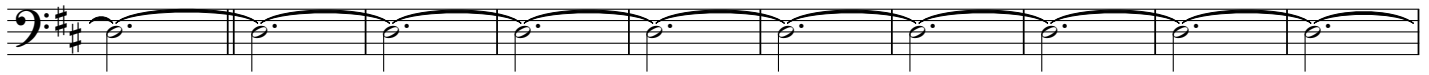
Adagio (♩ = 76)

7



16

A



26

molto rit.

B

Slightly moving (♩ = 86)

C accel.

16



48



55

Impetuoso (♩ = 132)



D



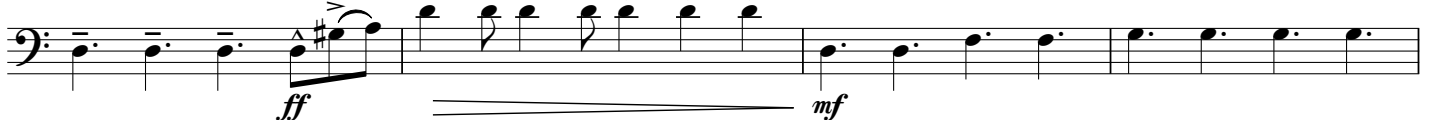
63



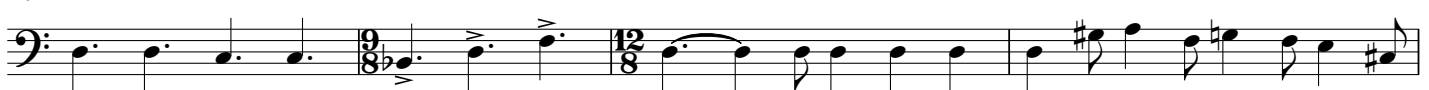
67



71



75



79



Double Bass

83

E

F

93

98

102

G

106

111

H

123

I

131

134

J

Exclusive copy for
Koninklijke Harmonie Eendracht Kortrijk-Aalbeke
No further distribution allowed

138

143 **molto rit.**

148 *pizz.* *pp* *arco* **K** Devoto (♩ = 60) *p espress.*

153 **molto rit.**

L Allegro fieramente (♩ = 116) *pizz.* *mf*

166

172

178 **M** Diabolico *mf*

184

190

N *arco* *ff* *mp*

O Devoto (♩ = 60)

Musical notation for 'Devoto' in bass clef, 6/4 time signature. It features a series of half notes with a slur over the first six notes. Dynamics include *p espress.* and *f*.

P Con speranza
play from 2nd time

repeat 4 times

Musical notation for 'Con speranza' in bass clef, 4/4 time signature. It features a series of quarter notes with a slur. Dynamics include *mp cresc.* and *ff*.

Q Allegro fieramente (♩ = 152)

Musical notation for 'Allegro fieramente' in bass clef, 4/4 time signature. It features a series of eighth notes with a slur. Dynamics include *mf*.

Musical notation for measures 234-238 in bass clef, 4/4 time signature. It features a series of eighth notes with a slur.

R Finale

Musical notation for 'Finale' in bass clef, 4/4 time signature. It features a series of quarter notes with a slur. Dynamics include *ff*.

Musical notation for measures 244-248 in bass clef, 4/4 time signature. It features a series of quarter notes with a slur. Dynamics include *fp* and *ff*.

Musical notation for measures 249-252 in bass clef, 4/4 time signature. It features eighth notes with triplets and a slur. Dynamics include *ff*.

S

Musical notation for measures 253-257 in bass clef, 3/4 time signature. It features eighth notes with a slur. Dynamics include *ff*.

Musical notation for measures 258-262 in bass clef, 7/8 time signature. It features half notes with a slur. Dynamics include *ff pesante*.

Musical notation for measures 263-267 in bass clef, 4/4 time signature. It features quarter notes with a slur. Dynamics include *fp* and *ff*.

Exclusive copy for
Koninklijke Harmonie Eendracht Kortrijk-Aalbeke
No further distribution allowed